

Aluminium Machine Trailer

(GTM 750kg to 4490kg)



Built tough for construction and mining
Custom made to suit your application

Built with pride, so you can tow with trust!

GTM: 750kg to 4490kg

Load Area: Custom Size

Suspension: Single Axle spring suspension or Tandem Axle Load Share

Axles: Custom to Load (SL Bearings, Parallel or 1.25t Sets)

Brakes: Disc Over-Ride (up to 2000kg) or Electric 10-12" with breakaway

Floor: Full Floor 3mm Aluminum Tread plate

Ramps: 1200mm to 2000mm (2) x Single Ladder Style with fixed stabilizer

Tyres/Rims: Range from 185x14LT 8Ply to 225/75 15" (with white ranger style rims)

Spare Tyre: (1) as above mounted

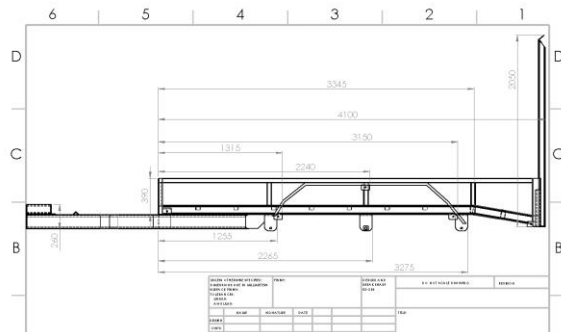
Lights: LED Multi Volt

Jockey Wheel or Stand (bolted, swing up)

Plug: 7 Pin round or flat

Tie Downs: (6) rated eye bolts

Trailer Sides: Open rail



Additional Options:

12 months QLD Registration

Chain Restraint Kit

Tracked Floor (open center)

Attachment rack/mounts

Grid walk Mesh ramps

Aluminium Toolboxes

Closed Sides

Jimboomba Trailers & Fabrication | 66 High Road, Bethania, Qld

Call (07) 3200 2427 | Fax (07) 3200 9331 | Email sales@jtf.net.au | Visit www.jtf.net.au