



JTF Plant Trailer (GTM 6t to 10t)

Designed to be durable
High Quality components

Built with pride, so you can tow with trust!

GTM: 6000kg to 10000kg

Load Area: Custom Size

Suspension: Spring Suspension 75x11mm 5 Leaf

Axles: 6t-10t Rated Tandem Axles Kits

Brakes: S-cam EBS Brake System

Coupling: Pintel Ring TE120

Floor: Tread plate (custom track or full floor or beavertail)

Ramps: 1600mm to 1800mm long ramps with stabilizer legs on ramp
Tyres/Rims: New 9.5rx17.5 Tyres with 6.75 x 17.5 tubeless rim (6stud)

Spare Tyre: (1) as above mounted

Lights: LED Multi Volt (ADR Approved LED)

Color: 2PAC Graphite Grey or White

Jockey Stand: 1.4t Heavy duty Stand (bolted)

Plug: 7 Pin Round Large

Tie Points: 6 Heavy Duty Tie Points

*Draw Bar 200 PFC 200 x 75 x 12mm

Side Chassis 100PFC 100 x 50 x 6.7 and cross runners



Additional Options

12 months QLD Registration

Custom Attachment Mounts/Racks

Flatbed or Drop Deck Designs available

Chain Restraint Kits

Alloy Grid walk Ramps

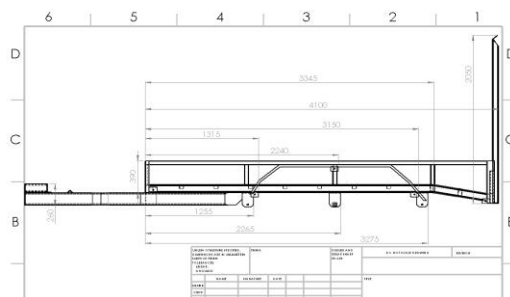
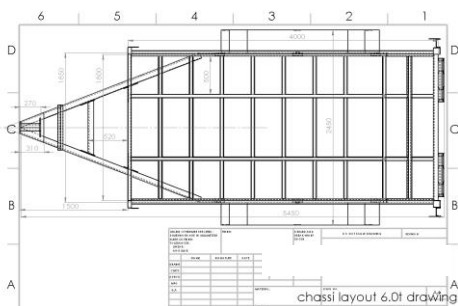
Safety Indicators and OH&S Plates

Hydraulic Ramps with onboard kit

Hot Dipped Galvanized

V-Orlando Coupling

Bartlett Ball Coupling



Jimboomba Trailers & Fabrication | 66 High Road, Bethania, QLD

Call (07) 3200 2427 | Fax (07) 3200 9331 | Email sales@jtf.net.au | Visit www.jtf.net.au